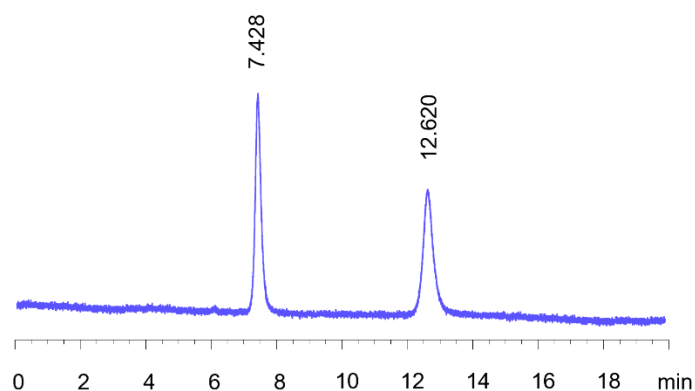


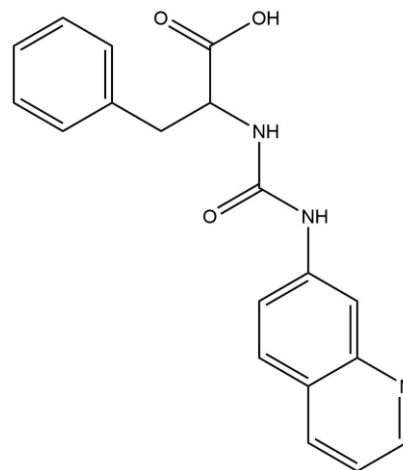
## CHIRAL APPLICATION NOTE

**Sample name:** AQC-Phenylalanine

**Chromatogram:**



**Structure:**



### Run Conditions:

Column: Q-Shell (10cmx4.6mm, 2.7 $\mu$ m)  
Mobile phase: 90/10 Methanol/50 mM Ammonium Formate pHa 4.5  
Flow Rate: 0.8 mL/min  
Temperature: Ambient (23 °C)  
Injection Volume: 5  $\mu$ L  
Detection: UV 248 nm  
Retention (min): 7.428/12.620 (Peak1/Peak 2)

**Resolution:** 11.96