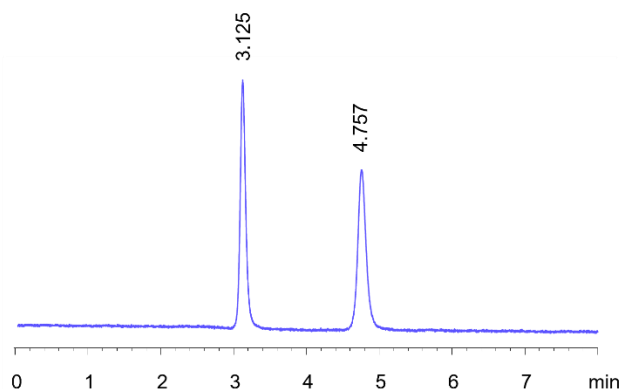


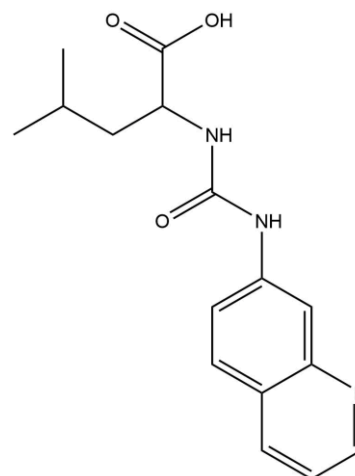
CHIRAL APPLICATION NOTE

Sample name: AQC-Leucine

Chromatogram:



Structure:



Run Conditions:

Column: Q-Shell (10cmx4.6mm, 2.7 μ m)
Mobile phase: 90/10 Methanol/50 mM Ammonium Formate pHa 4.5
Flow Rate: 1.0 mL/min
Temperature: Ambient (23 $^{\circ}$ C)
Injection Volume: 5 μ L
Detection: UV 248 nm
Retention (min): 3.125/4.757 (Peak1/Peak 2)

Resolution: 9.87