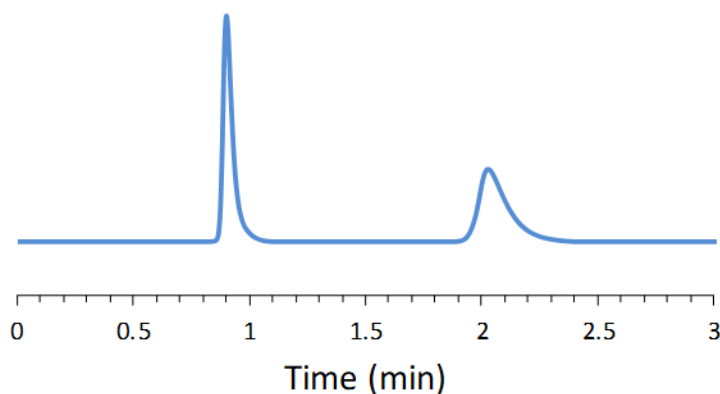


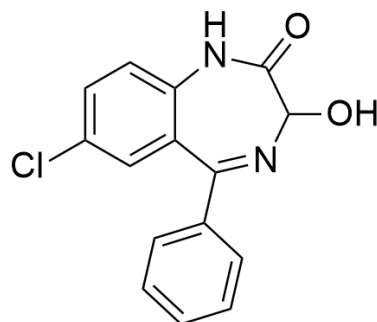
SFC CHIRAL APPLICATION NOTE

Sample name: Oxazepam

Chromatogram:



Structure:



Run Conditions:

Column:	TeicoShell (10cmx4.6mm, 2.7 μ m)
Co-solvent:	100: Methanol (40%)
Flow Rate:	4.0 mL/min
Temperature:	35 °C
Outlet Pressure:	100 Bar
Injection Volume:	2.0 μ L
Detection:	UV 220 nm
Retention (min):	0.90/2.03 (Peak 1/Peak 2)

Resolution: 7.83