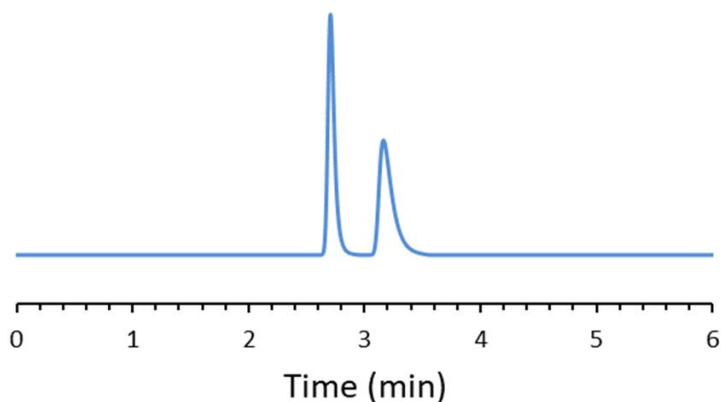


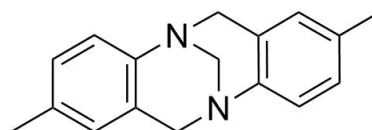
CHIRAL APPLICATION NOTE

Sample name: Troger's base

Chromatogram:



Structure:



Run Conditions:

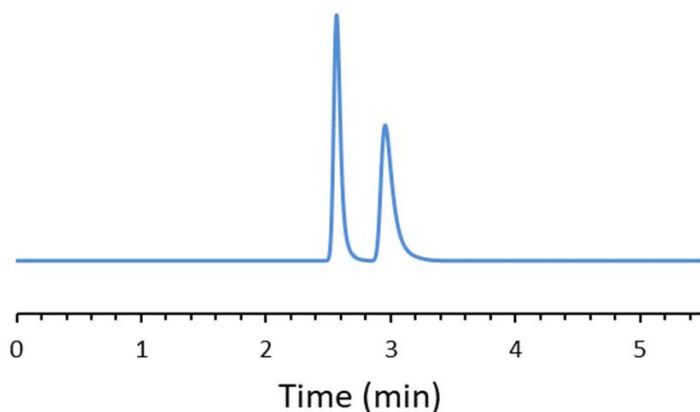
Column: MaltoShell-DMP (10cmx4.6mm, 2.7 μ m)
Mobile phase: 100: Methanol
Flow Rate: 0.6 mL/min
Temperature: Ambient (23 °C)
Injection Volume: 1.0 μ L
Detection: UV 230 nm
Retention (min): 2.71/3.16 (Peak 1/Peak 2)

Resolution: 2.99

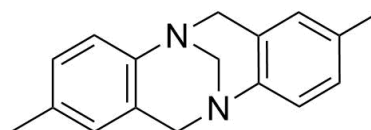
CHIRAL APPLICATION NOTE

Sample name: Troger's base

Chromatogram:



Structure:



Run Conditions:

Column: MaltoShell-DMP (10cmx4.6mm, 2.7 μ m)
Mobile phase: 100: Ethanol
Flow Rate: 0.6 mL/min
Temperature: Ambient (23 °C)
Injection Volume: 1.0 μ L
Detection: UV 230 nm
Retention (min): 2.57/2.96 (Peak 1/Peak 2)

Resolution: 2.84