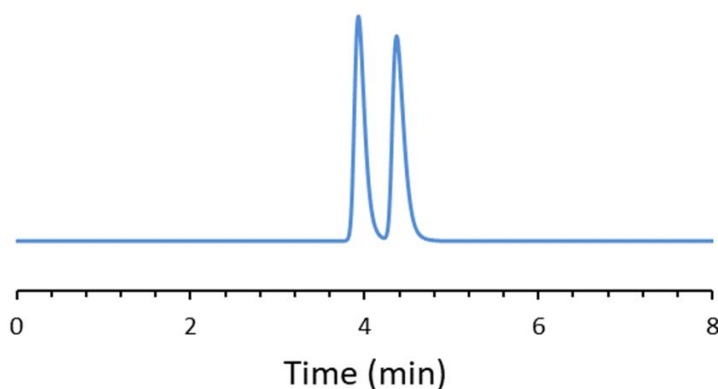


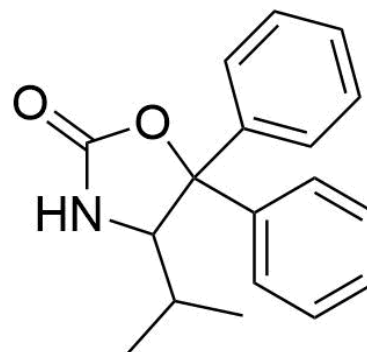
## CHIRAL APPLICATION NOTE

**Sample name:** 4-isopropyl-5,5-diphenyl-2-oxazolidinone

**Chromatogram:**



**Structure:**



### Run Conditions:

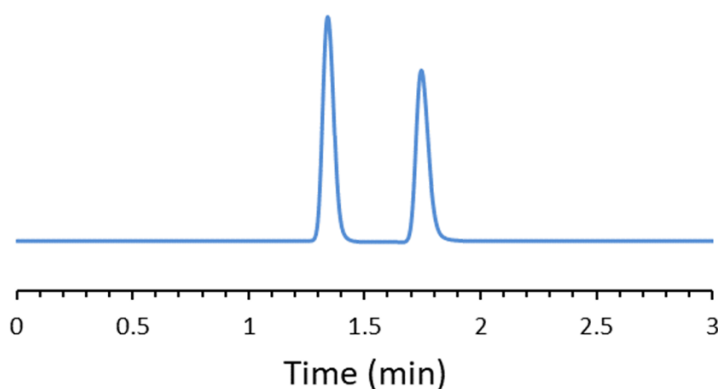
Column: MaltoShell-DMP (10cmx4.6mm, 2.7 $\mu$ m)  
Mobile phase: 90/10: Heptane/Isopropanol  
Flow Rate: 1.0 mL/min  
Temperature: Ambient (23 °C)  
Injection Volume: 1.0  $\mu$ L  
Detection: UV 230 nm  
Retention (min): 3.93/4.37 (Peak 1/Peak 2)

**Resolution:** 1.88

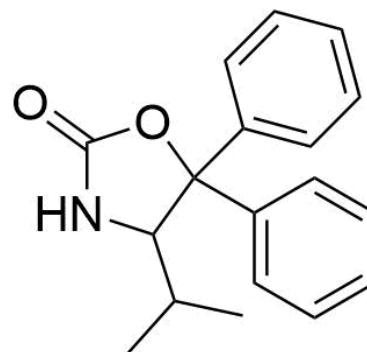
## CHIRAL APPLICATION NOTE

**Sample name:** 4-isopropyl-5,5-diphenyl-2-oxazolidinone

**Chromatogram:**



**Structure:**



### Run Conditions:

Column: MaltoShell-DMP (10cmx4.6mm, 2.7 $\mu$ m)  
Mobile phase: 95/5: Methyl tert-butyl ether/Methanol  
Flow Rate: 1.0 mL/min  
Temperature: Ambient (23 °C)  
Injection Volume: 1.0  $\mu$ L  
Detection: UV 254 nm  
Retention (min): 1.34/1.75 (Peak 1/Peak 2)

**Resolution:** 4.06