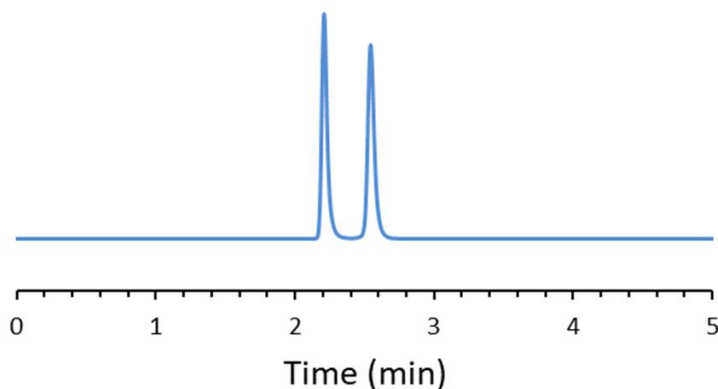


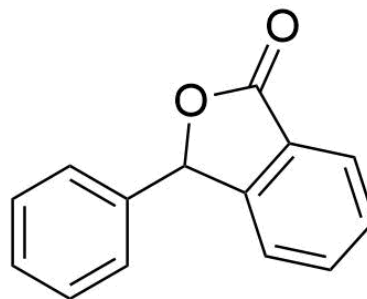
CHIRAL APPLICATION NOTE

Sample name: 3-Phenylphthalide

Chromatogram:



Structure:



Run Conditions:

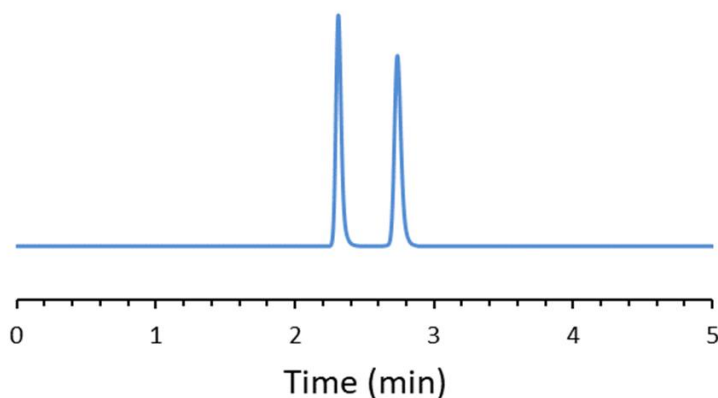
Column: MaltoShell-DMP (10cmx4.6mm, 2.7 μ m)
Mobile phase: 100: Methanol
Flow Rate: 0.6 mL/min
Temperature: Ambient (23 °C)
Injection Volume: 1.0 μ L
Detection: UV 230 nm
Retention (min): 2.21/2.54 (Peak 1/Peak 2)

Resolution: 4.38

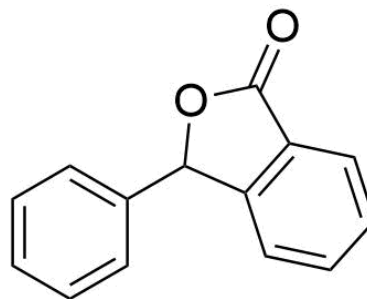
CHIRAL APPLICATION NOTE

Sample name: 3-Phenylphthalide

Chromatogram:



Structure:



Run Conditions:

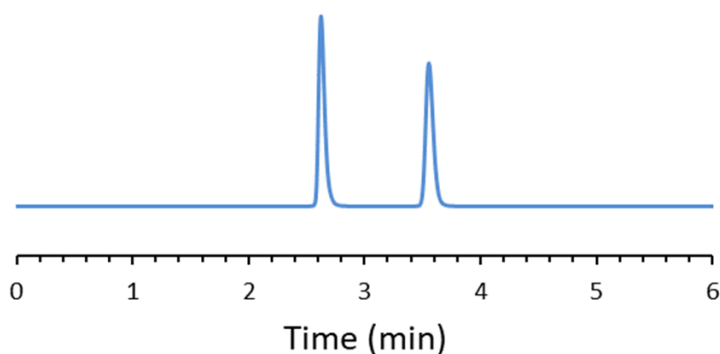
Column: MaltoShell-DMP (10cmx4.6mm, 2.7 μ m)
Mobile phase: 100: Ethanol
Flow Rate: 0.6 mL/min
Temperature: Ambient (23 °C)
Injection Volume: 1.0 μ L
Detection: UV 230 nm
Retention (min): 2.31/2.74 (Peak 1/Peak 2)

Resolution: 5.29

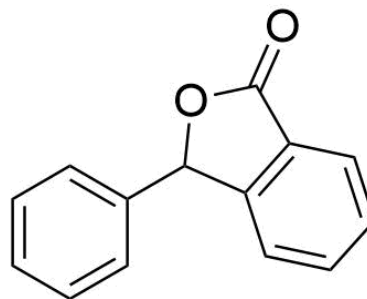
CHIRAL APPLICATION NOTE

Sample name: 3-Phenylphthalide

Chromatogram:



Structure:



Run Conditions:

Column: MaltoShell-DMP (10cmx4.6mm, 2.7 μ m)
Mobile phase: 80/20: Heptane/Ethanol
Flow Rate: 1.0 mL/min
Temperature: Ambient (23 °C)
Injection Volume: 1.0 μ L
Detection: UV 254 nm
Retention (min): 2.62/3.56 (Peak 1/Peak 2)

Resolution: 8.60