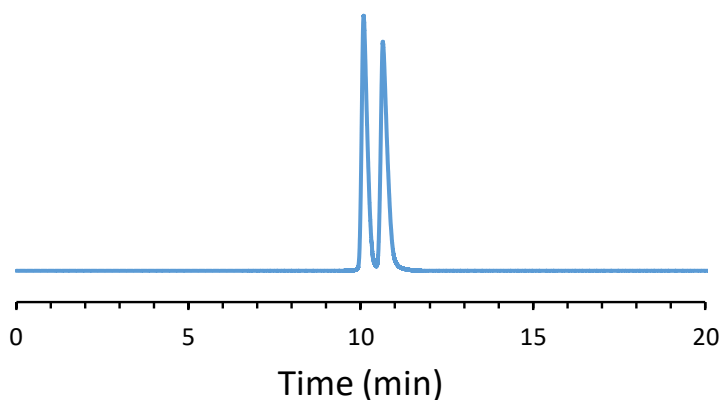


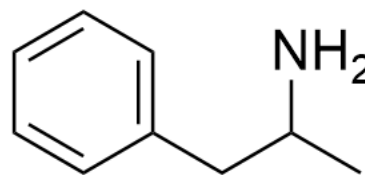
## CHIRAL APPLICATION NOTE

**Sample name:** Amphetamine

**Chromatogram:**



**Structure:**



### Run Conditions:

Column: CDSHell-RSP (15cmx4.6mm, 2.7 $\mu$ m)  
Mobile phase: 5/95: Acetonitrile/15 mM Ammonium Formate (pH 3.6)  
Flow Rate: 0.5 mL/min  
Temperature: 45 °C  
Injection Volume: 1.0  $\mu$ L  
Detection: UV 210 nm  
Retention (min): 10.08/10.64 (Peak 1/Peak 2)

**Resolution:** 1.74