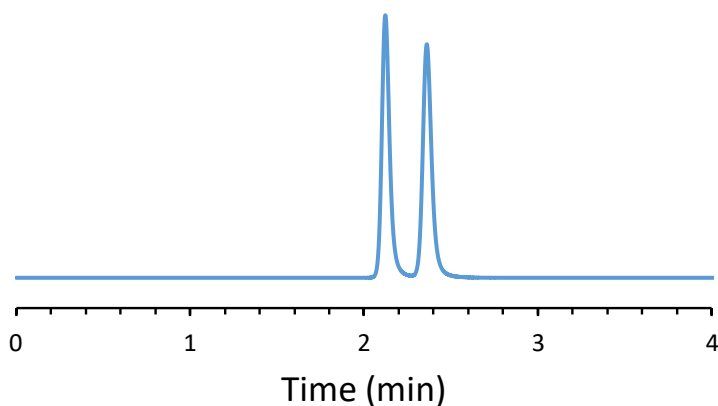


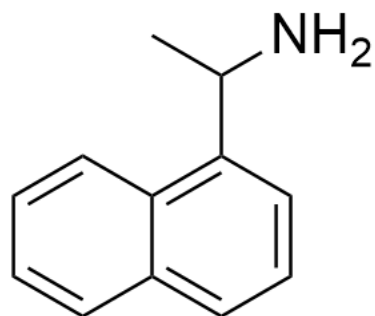
CHIRAL APPLICATION NOTE

Sample name: 1-(1-naphthyl)ethylamine

Chromatogram:



Structure:



Run Conditions:

Column: VancoShell (10cmx4.6mm, 2.7 μ m)
Mobile phase: 100/0.1 wt %: Methanol/Ammonium Trifluoroacetate
Flow Rate: 1.0 mL/min
Temperature: Ambient (23 °C)
Injection Volume: 1.0 μ L
Detection: UV 220 nm
Retention (min): 2.12/2.36 (Peak 1/Peak 2)

Resolution: 2.29