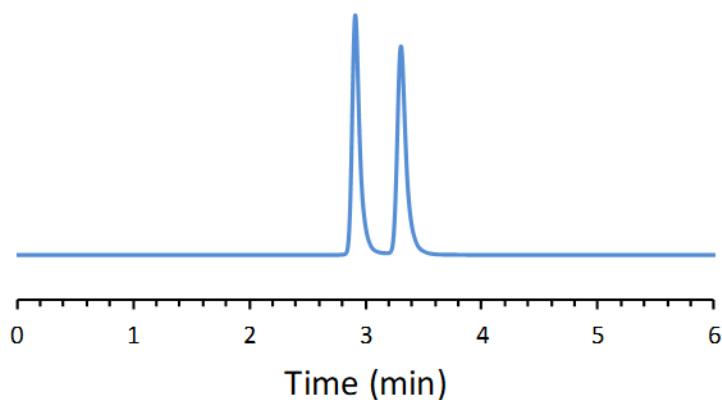


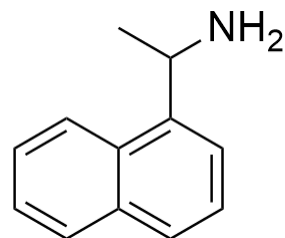
## CHIRAL APPLICATION NOTE

**Sample name:** 1-(1-naphthyl) ethylamine

**Chromatogram:**



**Structure:**



### Run Conditions:

Column: NicoShell (10cmx4.6mm, 2.7 $\mu$ m)  
Mobile phase: 100/0.2 wt %: Methanol/Ammonium Formate  
Flow Rate: 1.0 mL/min  
Temperature: Ambient (23 °C)  
Injection Volume: 1.0  $\mu$ L  
Detection: UV 220 nm  
Retention (min): 2.91/3.31 (Peak 1/Peak 2)

**Resolution:** 3.21