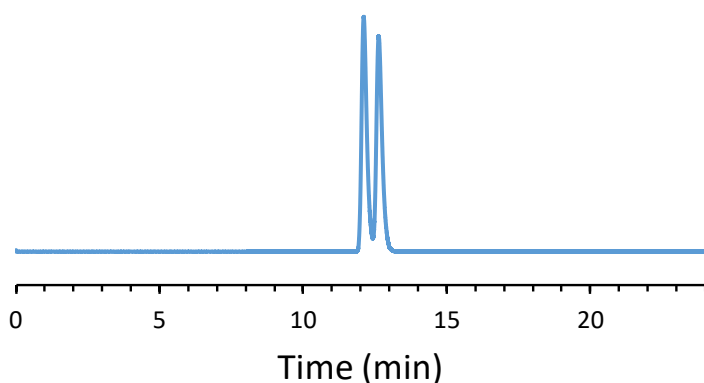


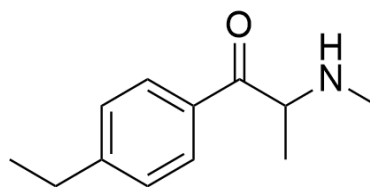
CHIRAL APPLICATION NOTE

Sample name: 4-ethylmethcathinone

Chromatogram:



Structure:



Run Conditions:

Column: NicoShell (10cmx4.6mm, 2.7 μ m) x2
Mobile phase: 60/40/0.3/0.2: Acetonitrile/Methanol/Acetic Acid/TEA
Flow Rate: 0.7 mL/min
Temperature: Ambient (23 °C)
Injection Volume: 1.0 μ L
Detection: UV 230 nm
Retention (min): 12.11/12.63 (Peak1/Peak 2)

Resolution: 1.53