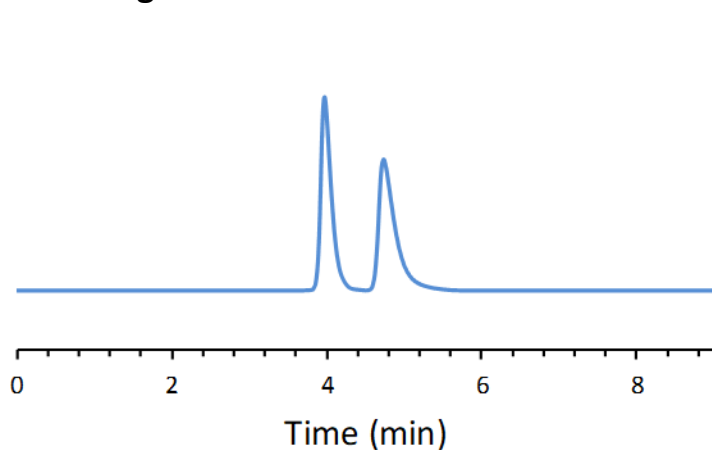


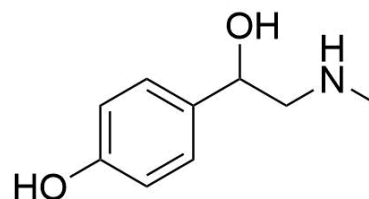
SFC CHIRAL APPLICATION NOTE

Sample name: Synephrine

Chromatogram:



Structure:



Run Conditions:

| | |
|-------------------|-------------------------------------|
| Column: | NicoShell (10cmx4.6mm, 2.7 μ m) |
| Co-solvent: | 100/0.2/0.3: Methanol/TEA/TFA (25%) |
| Flow Rate: | 4.0 mL/min |
| Temperature: | 30 °C |
| Outlet Pressure: | 100 Bar |
| Injection Volume: | 2.0 μ L |
| Detection: | UV 220 nm |
| Retention (min): | 3.97/4.73 (Peak 1/Peak 2) |

Resolution: 2.57