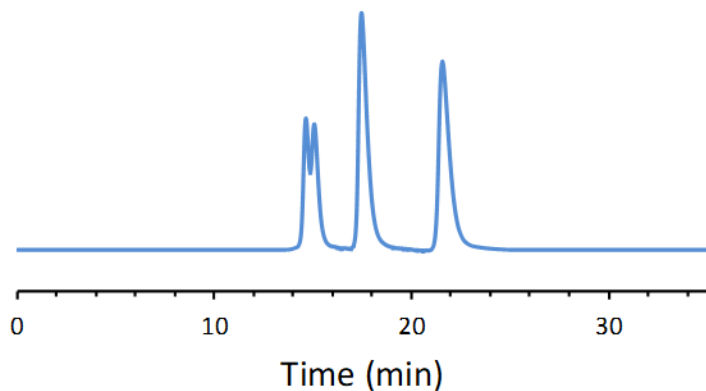


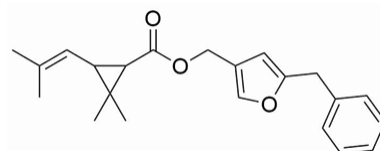
## CHIRAL APPLICATION NOTE

**Sample name:** Resmethrin

**Chromatogram:**



**Structure:**



### Run Conditions:

Column: CShell-RSP (15cmx4.6mm, 2.7 $\mu$ m)  
Mobile phase: 30/70: Isopropanol/16 mM Ammonium Formate (pH 3.6)  
Flow Rate: 0.4 mL/min  
Temperature: Ambient (23 °C)  
Injection Volume: 1.0  $\mu$ L  
Detection: UV 230 nm  
Retention (min): 14.64/15.08/17.47/21.57 (Peak 1/Peak 2/Peak 3/Peak 4)

**Resolution:** 0.66/3.19/4.69