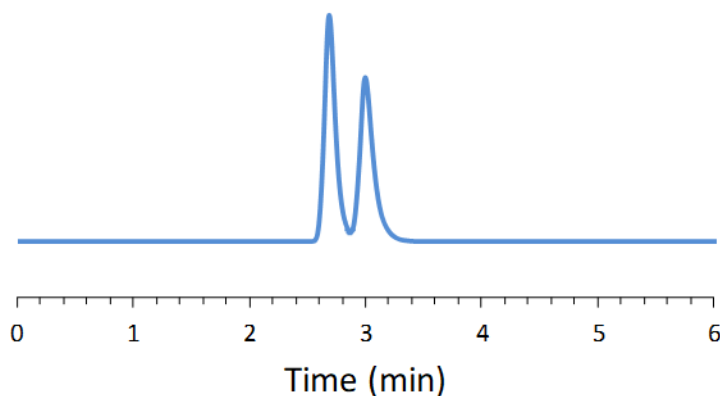


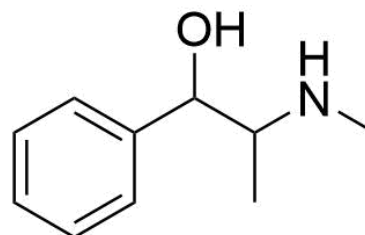
SFC CHIRAL APPLICATION NOTE

Sample name: Pseudoephedrine

Chromatogram:



Structure:



Run Conditions:

Column:	VancoShell (10cmx4.6mm, 2.7 μ m)
Co-solvent:	100/0.1: Methanol/Ammonium Formate (25%)
Flow Rate:	4.0 mL/min
Temperature:	30 °C
Outlet Pressure:	100 Bar
Injection Volume:	2.0 μ L
Detection:	UV 220 nm
Retention (min):	2.69/3.00 (Peak 1/Peak 2)

Resolution: 1.66