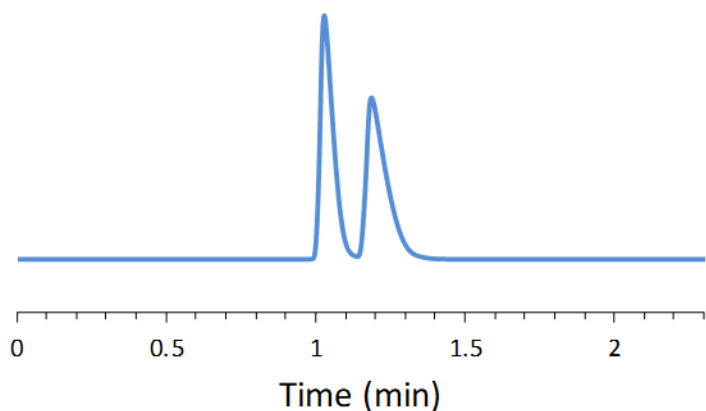


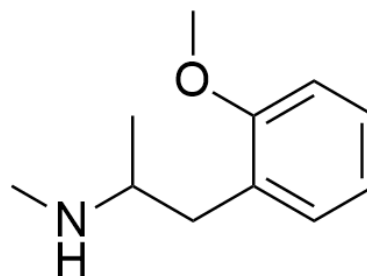
SFC CHIRAL APPLICATION NOTE

Sample name: Methoxyphenamine

Chromatogram:



Structure:



Run Conditions:

| | |
|-------------------|--------------------------------------|
| Column: | VancoShell (10cmx4.6mm, 2.7 μ m) |
| Co-solvent: | 100/0.1/0.1: Methanol/TEA/TFA (25%) |
| Flow Rate: | 4.0 mL/min |
| Temperature: | 30 °C |
| Outlet Pressure: | 100 Bar |
| Injection Volume: | 2.0 μ L |
| Detection: | UV 220 nm |
| Retention (min): | 1.03/1.19 (Peak 1/Peak 2) |

Resolution: 1.60