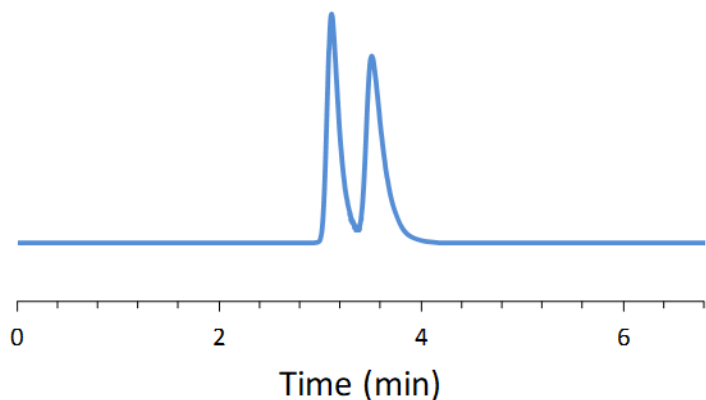


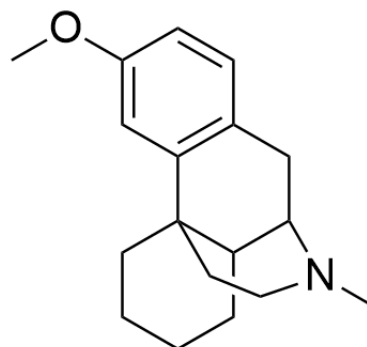
## SFC CHIRAL APPLICATION NOTE

**Sample name:** Methorphan

**Chromatogram:**



**Structure:**



### Run Conditions:

Column:	VancoShell (15cmx4.6mm, 2.7 $\mu$ m)
Co-solvent:	100/0.1/0.1: Methanol/TEA/TFA (20%)
Flow Rate:	3.0 mL/min
Temperature:	30 °C
Outlet Pressure:	100 Bar
Injection Volume:	2.0 $\mu$ L
Detection:	UV 220 nm
Retention (min):	3.11/3.51 (Peak 1/Peak 2)

**Resolution:** 1.56