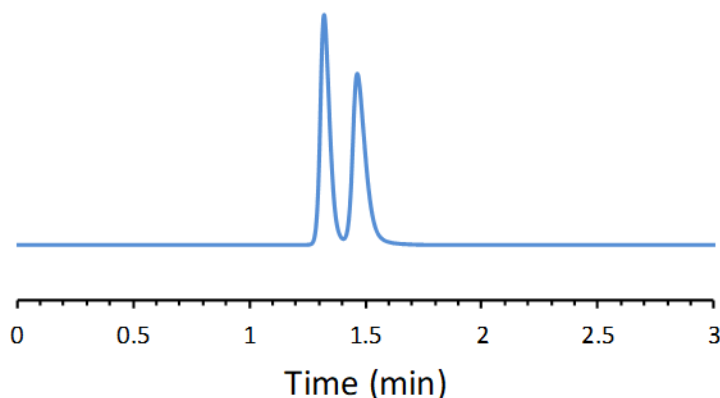


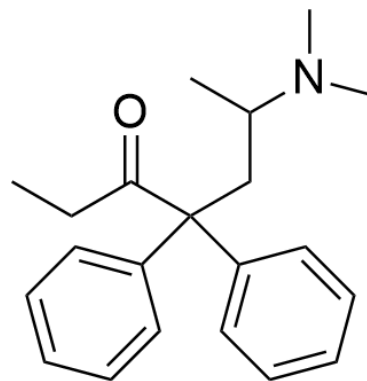
## SFC CHIRAL APPLICATION NOTE

**Sample name:** Methadone

**Chromatogram:**



**Structure:**



### Run Conditions:

Column:	NicoShell (10cmx4.6mm, 2.7 $\mu$ m)
Co-solvent:	97/3/0.1: Methanol/Water/Ammonium Formate (25%)
Flow Rate:	4.0 mL/min
Temperature:	30 °C
Outlet Pressure:	100 Bar
Injection Volume:	2.0 $\mu$ L
Detection:	UV 220 nm
Retention (min):	1.32/1.47 (Peak 1/Peak 2)

**Resolution:** 1.69