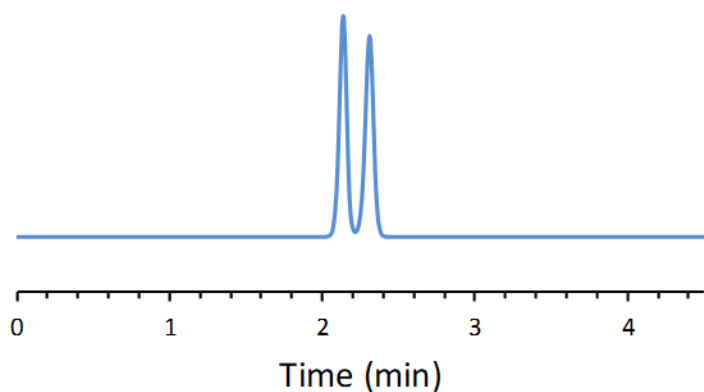


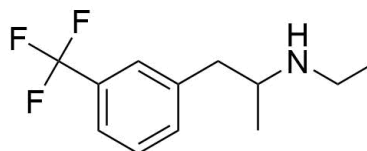
## SFC CHIRAL APPLICATION NOTE

**Sample name:** Fenfluramine

**Chromatogram:**



**Structure:**



**Run Conditions:**

Column:	NicoShell (15cmx4.6mm, 2.7 $\mu$ m)
Co-solvent:	97/3/0.1: Methanol/Water/Ammonium Formate (20%)
Flow Rate:	4.0 mL/min
Temperature:	25 °C
Outlet Pressure:	100 Bar
Injection Volume:	2.0 $\mu$ L
Detection:	UV 220 nm
Retention (min):	2.14/2.31 (Peak 1/Peak 2)

**Resolution:** 1.78