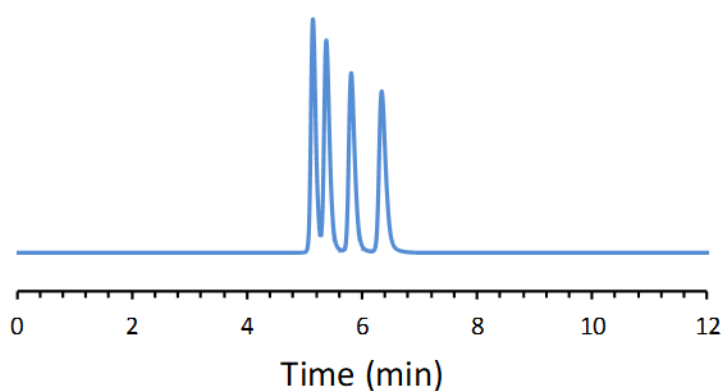


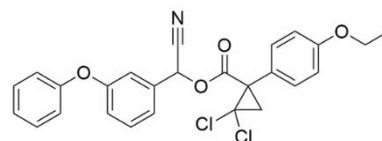
CHIRAL APPLICATION NOTE

Sample name: Cycloprothrin

Chromatogram:



Structure:



Run Conditions:

Column: CDSHell-RSP (15cmx4.6mm, 2.7 μ m)
Mobile phase: 60/40: Methanol/16 mM Ammonium Formate (pH 3.6)
Flow Rate: 0.8 mL/min
Temperature: Ambient (23 °C)
Injection Volume: 1.0 μ L
Detection: UV 230 nm
Retention (min): 5.15/5.38/5.81/6.34 (Peak 1/Peak 2/Peak 3/Peak 4)

Resolution: 1.20/1.89/1.95