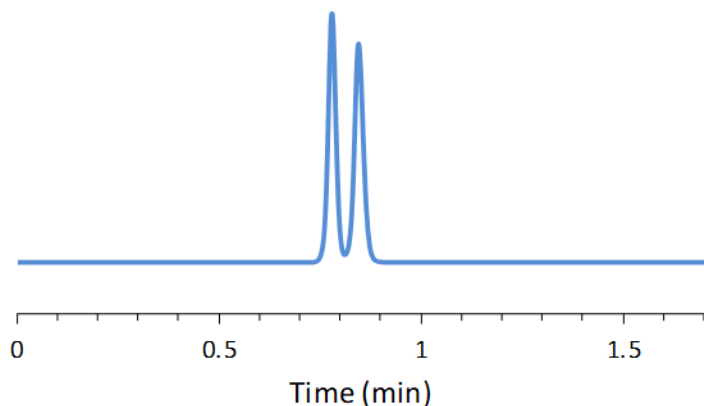


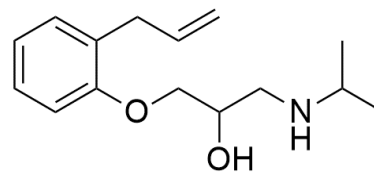
## SFC CHIRAL APPLICATION NOTE

**Sample name:** Alprenolol

**Chromatogram:**



**Structure:**



**Run Conditions:**

Column:	TeicoShell (10cmx4.6mm, 2.7 $\mu$ m)
Co-solvent:	100/0.1/0.1: Methanol/TEA/TFA (40%)
Flow Rate:	4.0 mL/min
Temperature:	30 °C
Outlet Pressure:	100 Bar
Injection Volume:	2.0 $\mu$ L
Detection:	UV 220 nm
Retention (min):	0.78/0.85 (Peak 1/Peak 2)

**Resolution:** 1.74