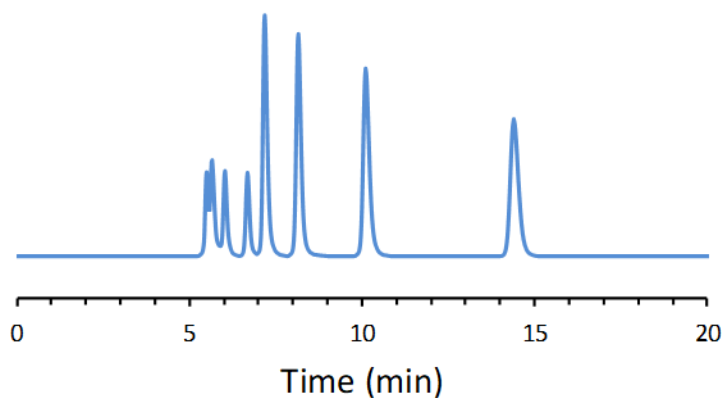


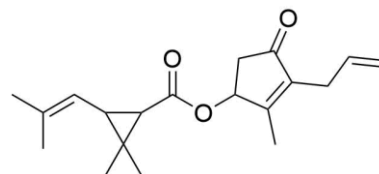
## CHIRAL APPLICATION NOTE

**Sample name:** Allethrin

**Chromatogram:**



**Structure:**



**Run Conditions:**

Column: CDSHell-RSP (15cmx4.6mm, 2.7 $\mu$ m)  
Mobile phase: 30/70: Acetonitrile/16 mM Ammonium Formate (pH 3.6)  
Flow Rate: 0.8 mL/min  
Temperature: Ambient (23 °C)  
Injection Volume: 1.0  $\mu$ L  
Detection: UV 230 nm  
Retention (min): 5.50/5.66/6.03/6.68/7.18/8.16/10.10/14.39 (Peaks 1-8)

**Resolution:** 0.70/1.77/3.43/2.34/4.04/6.83/11.29