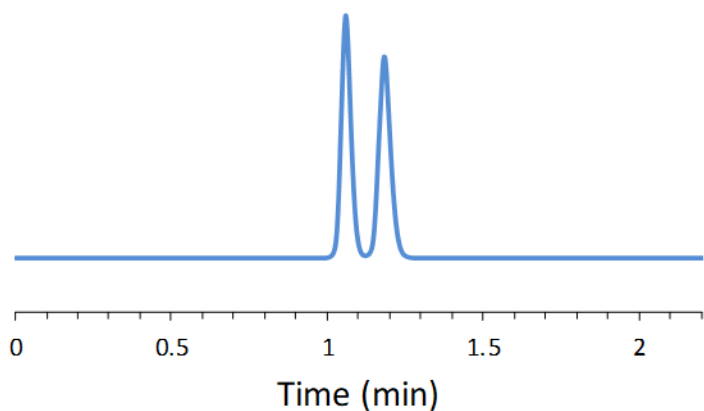


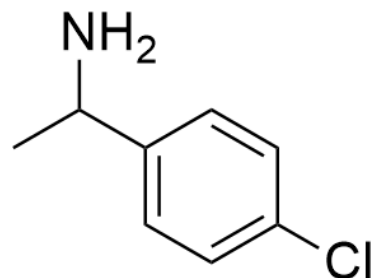
SFC CHIRAL APPLICATION NOTE

Sample name: 1-(4-chlorophenyl) ethylamine

Chromatogram:



Structure:



Run Conditions:

Column:	LarihcShell-P (10cmx4.6mm, 2.7 μ m)
Co-solvent:	100/0.2/0.3: Methanol/TEA/TFA (25%)
Flow Rate:	4.0 mL/min
Temperature:	30 °C
Outlet Pressure:	100 Bar
Injection Volume:	2.0 μ L
Detection:	UV 220 nm
Retention (min):	1.06/1.18 (Peak 1/Peak 2)

Resolution: 1.93