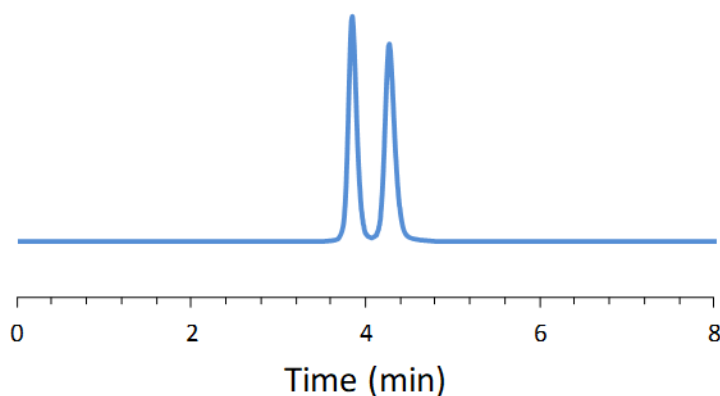


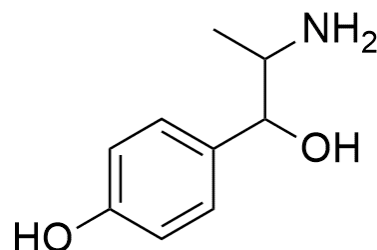
## SFC CHIRAL APPLICATION NOTE

**Sample name:**  $\alpha$ -(1-aminoethyl)-4-hydroxybenzyl alcohol

**Chromatogram:**



**Structure:**



### Run Conditions:

Column:	LarihcShell-P (10cmx4.6mm, 2.7 $\mu$ m)
Co-solvent:	100/0.2/0.3: Methanol/TEA/TFA (20%)
Flow Rate:	4.0 mL/min
Temperature:	25 °C
Outlet Pressure:	100 Bar
Injection Volume:	2.0 $\mu$ L
Detection:	UV 220 nm
Retention (min):	3.85/4.27 (Peak 1/Peak 2)

**Resolution:** 3.37