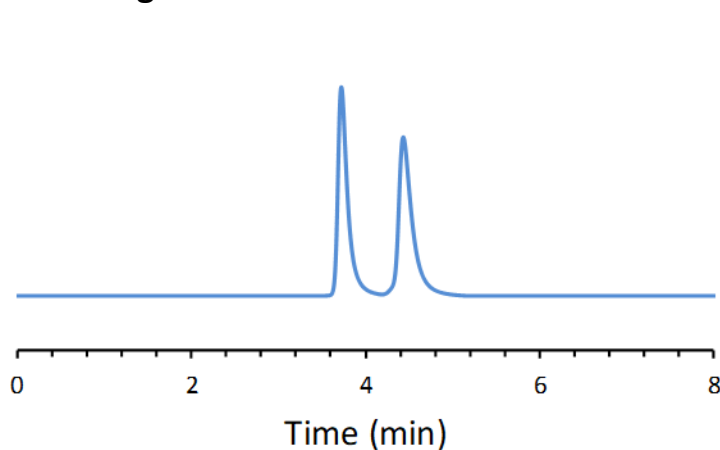


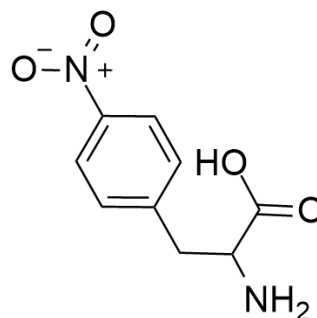
CHIRAL APPLICATION NOTE

Sample name: 4-nitrophenylalanine

Chromatogram:



Structure:



Run Conditions:

Column: LarihcShell-P (10cmx4.6mm, 2.7 μ m)
Mobile phase: 90/10/0.3/0.2: Acetonitrile/Methanol/Trifluoroacetic acid/TEA
Flow Rate: 1.0 mL/min
Temperature: Ambient (23 °C)
Injection Volume: 1.0 μ L
Detection: UV 254 nm
Retention (min): 3.72/4.44 (Peak 1/Peak 2)

Resolution: 3.19