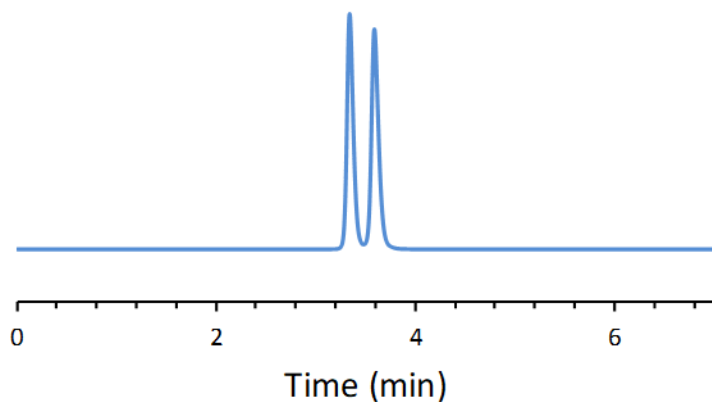


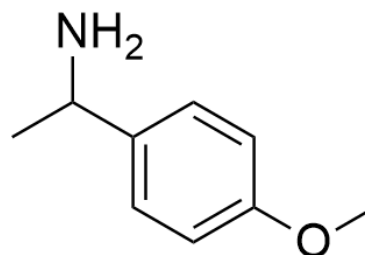
## CHIRAL APPLICATION NOTE

**Sample name:** 4-methoxy- $\alpha$ -methylbenzylamine

**Chromatogram:**



**Structure:**



### Run Conditions:

Column: LarihcShell-P (10cmx4.6mm, 2.7 $\mu$ m)  
Mobile phase: 90/10/0.3/0.2: Acetonitrile/Methanol/Trifluoroacetic acid/TEA  
Flow Rate: 1.0 mL/min  
Temperature: Ambient (23 °C)  
Injection Volume: 1.0  $\mu$ L  
Detection: UV 220 nm  
Retention (min): 3.34/3.59 (Peak 1/Peak 2)

**Resolution:** 2.03