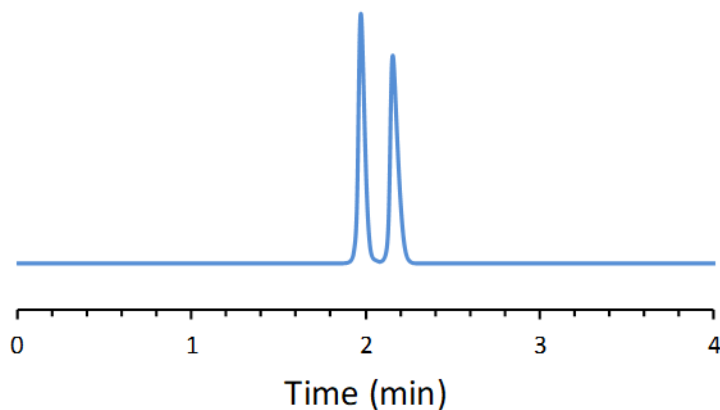


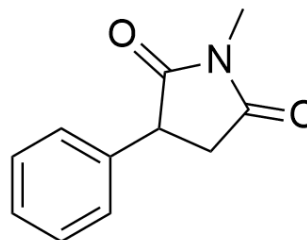
## CHIRAL APPLICATION NOTE

**Sample name:** Phensuximide

**Chromatogram:**



**Structure:**



**Run Conditions:**

Column: CDSHELL-RSP (10cmx4.6mm, 2.7 $\mu$ m)  
Mobile phase: 20/80: Acetonitrile/16 mM Ammonium Formate (pH 3.6)  
Flow Rate: 1.0 mL/min  
Temperature: Ambient (23  $^{\circ}$ C)  
Injection Volume: 1.0  $\mu$ L  
Detection: UV 220 nm  
Retention (min): 1.97/2.16 (Peak 1/Peak 2)

**Resolution:** 2.50