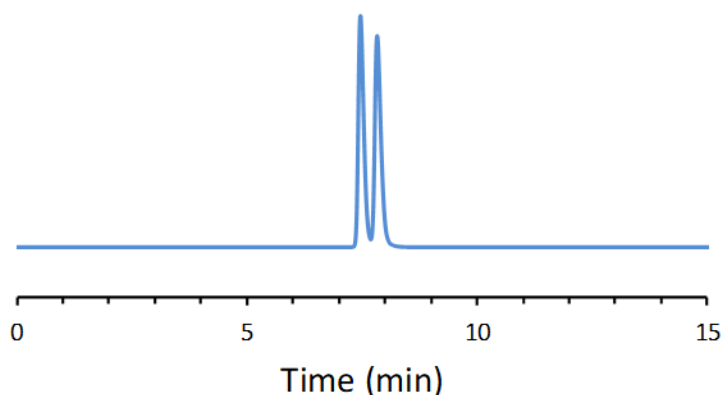


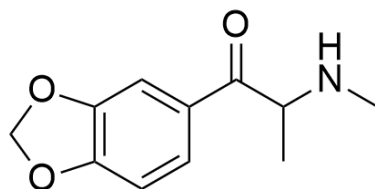
## CHIRAL APPLICATION NOTE

**Sample name:** Methylone

**Chromatogram:**



**Structure:**



### Run Conditions:

Column: CDSHELL-RSP (15cmx4.6mm, 2.7 $\mu$ m)  
Mobile phase: 10/90: Acetonitrile/16 mM Ammonium Formate (pH 3.6)  
Flow Rate: 0.7 mL/min  
Temperature: Ambient (23  $^{\circ}$ C)  
Injection Volume: 1.0  $\mu$ L  
Detection: UV 230 nm  
Retention (min): 7.46/7.83 (Peak 1/Peak 2)

**Resolution:** 1.57