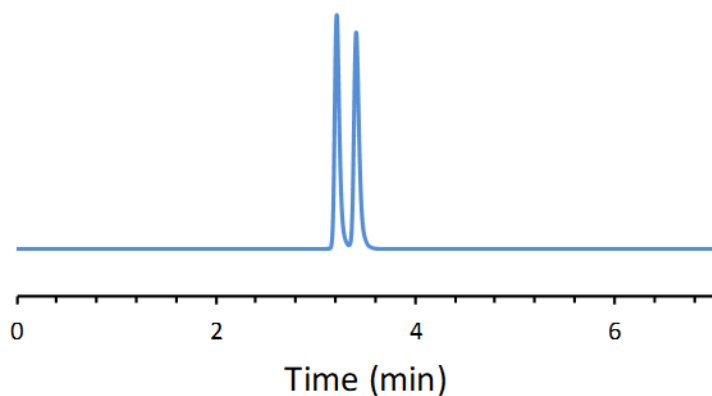


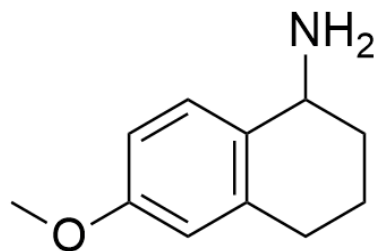
CHIRAL APPLICATION NOTE

Sample name: 6-methoxy-1,2,3,4-tetrahydro-1-naphthalenylamine

Chromatogram:



Structure:



Run Conditions:

Column: CShell-RSP (15cmx4.6mm, 2.7 μ m)
Mobile phase: 10/90: Acetonitrile/16 mM Ammonium Formate (pH 3.6)
Flow Rate: 1.0 mL/min
Temperature: Ambient (23 °C)
Injection Volume: 1.0 μ L
Detection: UV 220 nm
Retention (min): 3.21/3.41 (Peak 1/Peak 2)

Resolution: 2.16