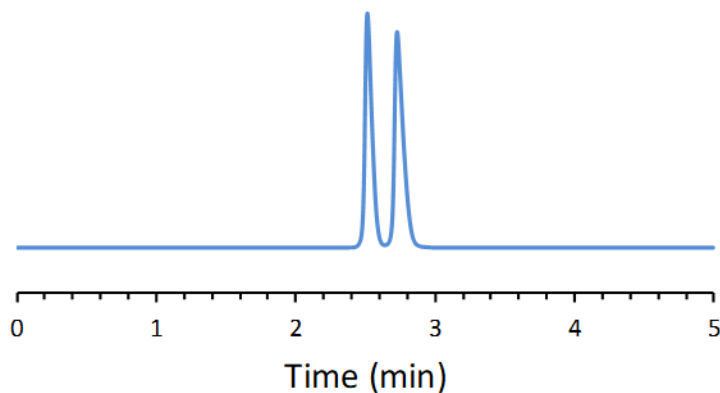


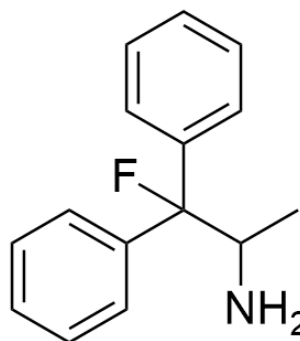
## CHIRAL APPLICATION NOTE

**Sample name:** 1,1-diphenyl-1-fluoro-2-aminopropane

**Chromatogram:**



**Structure:**



### Run Conditions:

Column: CDSHell-RSP (10cmx4.6mm, 2.7 $\mu$ m)  
Mobile phase: 30/70: Acetonitrile/16 mM Ammonium Formate (pH 3.6)  
Flow Rate: 1.0 mL/min  
Temperature: Ambient (23 °C)  
Injection Volume: 1.0  $\mu$ L  
Detection: UV 220 nm  
Retention (min): 2.51/2.73 (Peak 1/Peak 2)

**Resolution:** 2.10