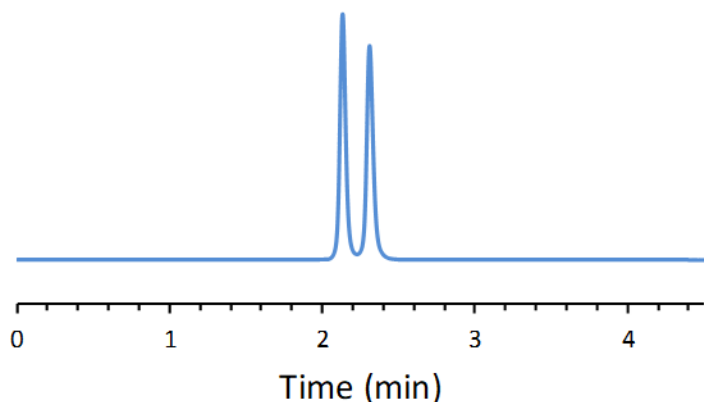


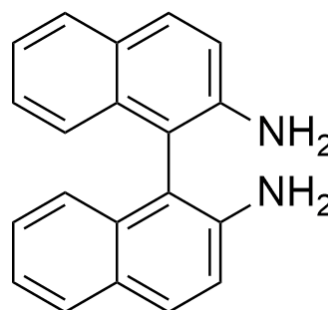
## CHIRAL APPLICATION NOTE

**Sample name:** 1,1'-binaphthyl-2,2'-diamine

**Chromatogram:**



**Structure:**



**Run Conditions:**

Column: CDSHELL-RSP (10cmx4.6mm, 2.7 $\mu$ m)  
Mobile phase: 30/70: Acetonitrile/16 mM Ammonium Formate (pH 3.6)  
Flow Rate: 0.8 mL/min  
Temperature: Ambient (23 °C)  
Injection Volume: 1.0  $\mu$ L  
Detection: UV 220 nm  
Retention (min): 2.13/2.31 (Peak 1/Peak 2)

**Resolution:** 2.44