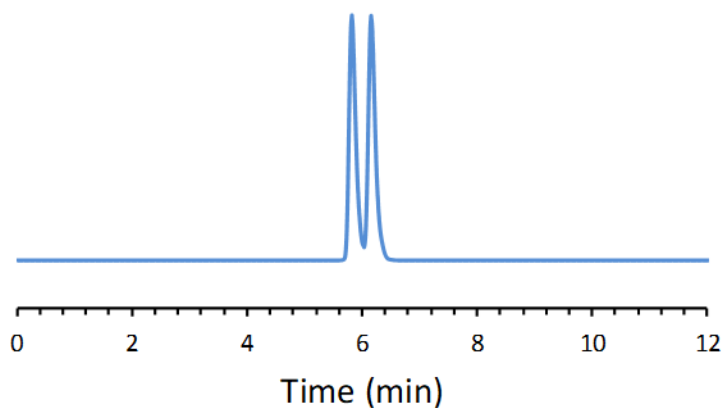


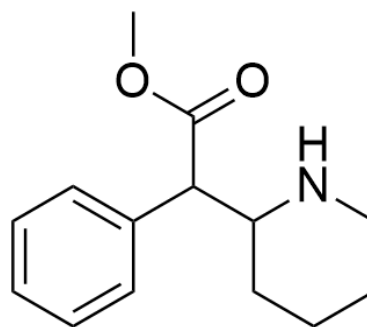
## CHIRAL APPLICATION NOTE

**Sample name:** Methylphenidate

**Chromatogram:**



**Structure:**



### Run Conditions:

Column: NicoShell (10cmx4.6mm, 2.7 $\mu$ m)  
Mobile phase: 50/50/0.3/0.2: Acetonitrile/Methanol/Acetic Acid/Triethylamine  
Flow Rate: 0.7 mL/min  
Temperature: Ambient (23 °C)  
Injection Volume: 1.0  $\mu$ L  
Detection: UV 230 nm  
Retention (min): 5.82/6.16 (Peak 1/Peak 2)

**Resolution:** 1.49