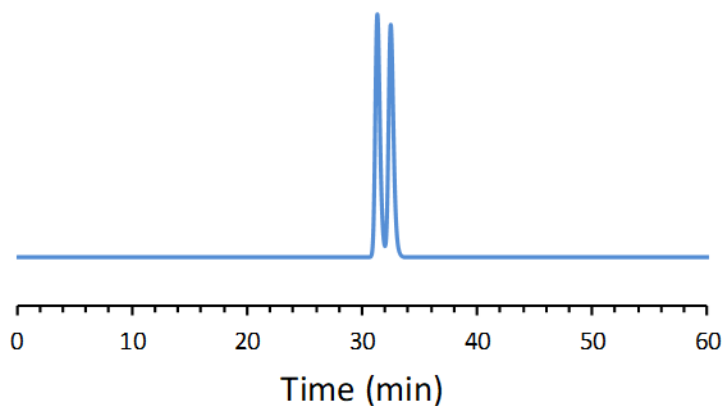


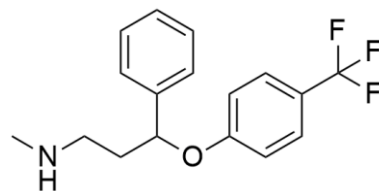
## CHIRAL APPLICATION NOTE

**Sample name:** Fluoxetine

**Chromatogram:**



**Structure:**



### Run Conditions:

Column: NicoShell (10cmx4.6mm, 2.7 $\mu$ m) x2  
Mobile phase: 60/40/0.3/0.2: Acetonitrile/Methanol/Acetic acid/Triethylamine  
Flow Rate: 0.3 mL/min  
Temperature: Ambient (23 °C)  
Injection Volume: 1.0  $\mu$ L  
Detection: UV 230 nm  
Retention (min): 31.33/32.49 (Peak 1/Peak 2)

**Resolution:** 1.49