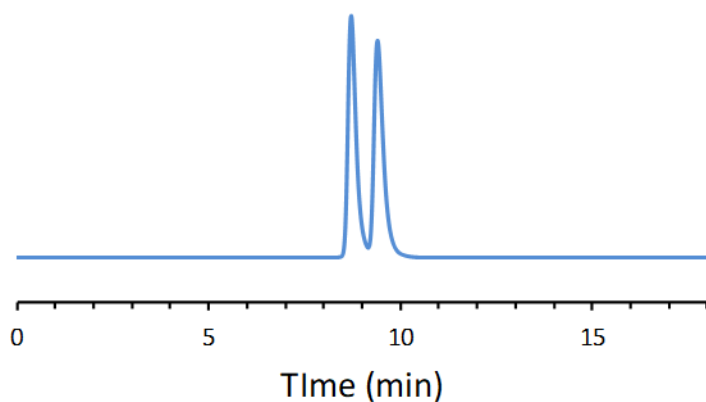


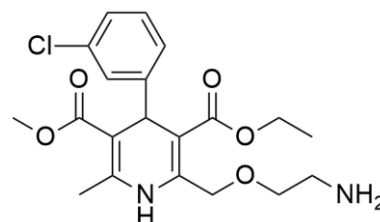
CHIRAL APPLICATION NOTE

Sample name: Amlodipine

Chromatogram:



Structure:



Run Conditions:

Column: NicoShell (10cmx4.6mm, 2.7 μ m)
Mobile phase: 100/0.2/0.05: Methanol/Acetic acid/Ammonium Hydroxide
Flow Rate: 1.0 mL/min
Temperature: Ambient (23 $^{\circ}$ C)
Injection Volume: 1.0 μ L
Detection: UV 230 nm
Retention (min): 8.72/9.40 (Peak 1/Peak 2)

Resolution: 1.68