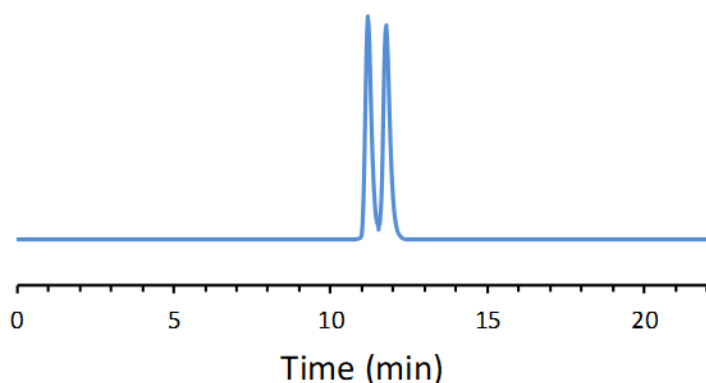


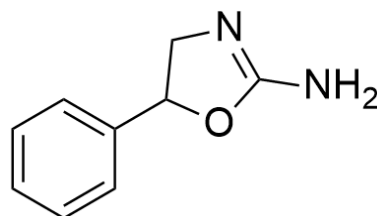
## CHIRAL APPLICATION NOTE

**Sample name:** Aminorex

**Chromatogram:**



**Structure:**



**Run Conditions:**

Column: NicoShell (10cmx4.6mm, 2.7 $\mu$ m)  
Mobile phase: 100/0.2/0.05: Methanol/Acetic Acid/Ammonium Hydroxide  
Flow Rate: 0.5 mL/min  
Temperature: Ambient (23 °C)  
Injection Volume: 1.0  $\mu$ L  
Detection: UV 220 nm  
Retention (min): 11.18/11.77 (Peak 1/Peak 2)

**Resolution:** 1.56