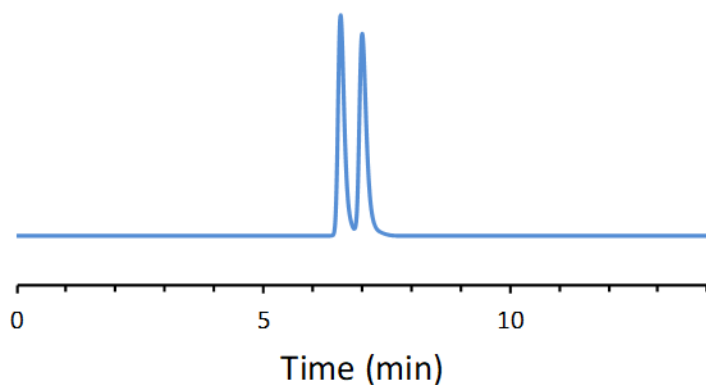


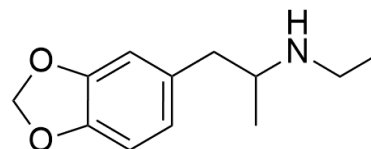
## CHIRAL APPLICATION NOTE

**Sample name:** 3,4-methylenedioxy-N-ethylamphetamine

**Chromatogram:**



**Structure:**



**Run Conditions:**

Column: NicoShell (10cmx4.6mm, 2.7 $\mu$ m)  
Mobile phase: 60/40/0.3/0.2: Acetonitrile/Methanol/Acetic Acid/Triethylamine  
Flow Rate: 1.5 mL/min  
Temperature: Ambient (23  $^{\circ}$ C)  
Injection Volume: 1.0  $\mu$ L  
Detection: UV 230 nm  
Retention (min): 6.57/7.00 (Peak 1/Peak 2)

**Resolution:** 1.76