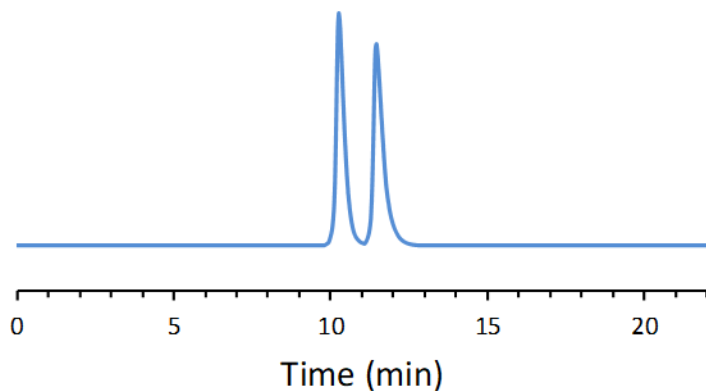


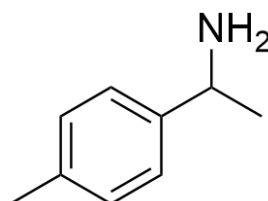
CHIRAL APPLICATION NOTE

Sample name: 1-(4-methylphenyl) ethylamine

Chromatogram:



Structure:



Run Conditions:

Column: NicoShell (15cmx4.6mm, 2.7 μ m)
Mobile phase: 60/40/0.3/0.2: Acetonitrile/Methanol/Acetic acid/Triethylamine
Flow Rate: 1.0 mL/min
Temperature: Ambient (23 °C)
Injection Volume: 1.0 μ L
Detection: UV 220 nm
Retention (min): 10.26/11.46 (Peak 1/Peak 2)

Resolution: 2.46