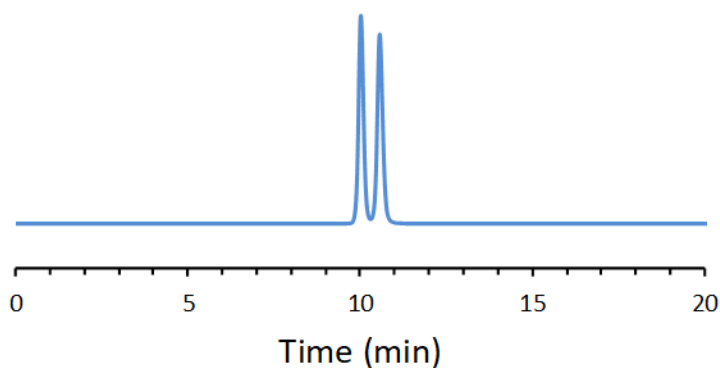


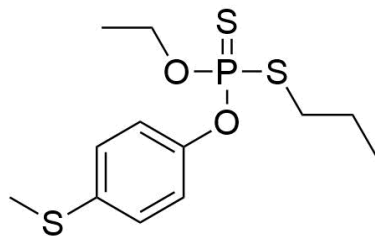
CHIRAL APPLICATION NOTE

Sample name: Sulprofos

Chromatogram:



Structure:



Run Conditions:

Column: CDSHELL-RSP (15cmx4.6mm, 2.7 μ m)
Mobile phase: 60/40: Methanol/16 mM Ammonium Formate (pH 3.6)
Flow Rate: 0.5 mL/min
Temperature: Ambient (23 °C)
Injection Volume: 1.0 μ L
Detection: UV 254 nm
Retention (min): 10.02/10.57 (Peak 1/Peak 2)

Resolution: 1.89