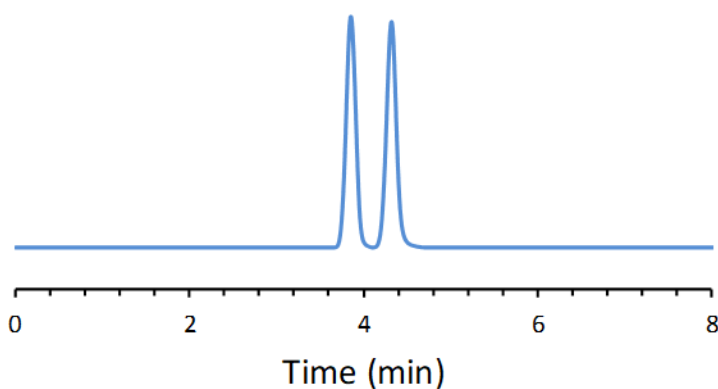


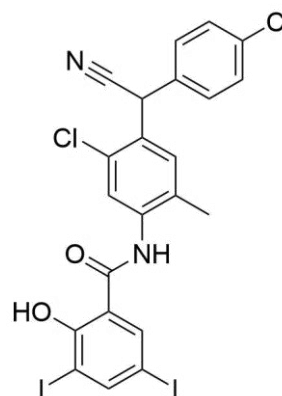
CHIRAL APPLICATION NOTE

Sample name: Closantel

Chromatogram:



Structure:



Run Conditions:

Column: LarihcShell-P (10cmx4.6mm, 2.7 μ m)
Mobile phase: 90/10/0.3/0.2: Heptane/Isopropanol/Trifluoroacetic acid/TEA
Flow Rate: 0.8 mL/min
Temperature: Ambient (23 °C)
Injection Volume: 1.0 μ L
Detection: UV 230 nm
Retention (min): 3.86/4.32 (Peak 1/Peak 2)

Resolution: 2.21