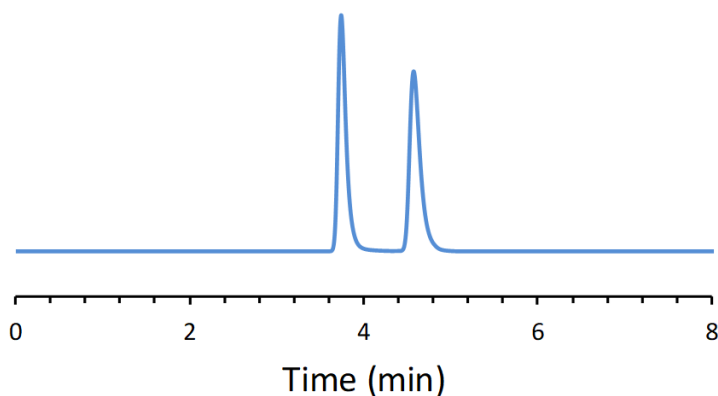


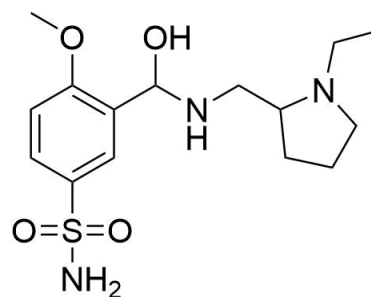
CHIRAL APPLICATION NOTE

Sample name: Sulpiride

Chromatogram:



Structure:



Run Conditions:

Column: NicoShell (10cmx4.6mm, 2.7 μ m)
Mobile phase: 100/0.5 wt %: Methanol/Ammonium Formate
Flow Rate: 1.0 mL/min
Temperature: 45 °C
Injection Volume: 1.0 μ L
Detection: UV 230 nm
Retention (min): 3.74/4.58 (Peak 1/Peak 2)

Resolution: 4.33