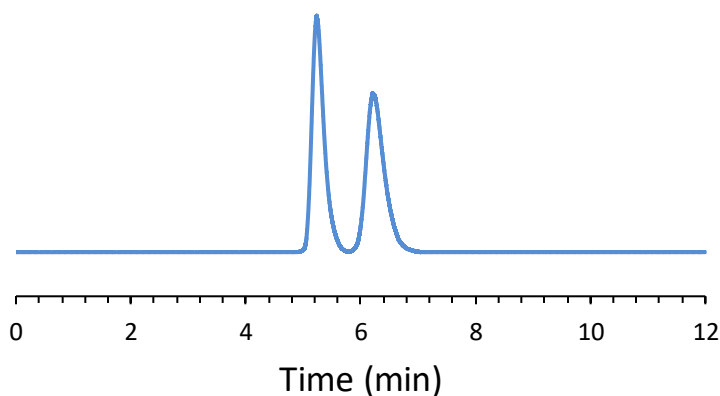


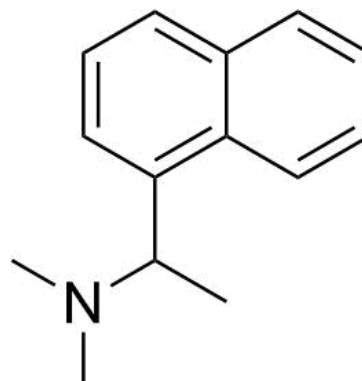
CHIRAL APPLICATION NOTE

Sample name: N,N-dimethyl-1-(1-naphthyl)ethylamine

Chromatogram:



Structure:



Run Conditions:

Column: VancoShell (10cmx4.6mm, 2.7 μ m)
Mobile phase: 70/30/0.3/0.2: Hexane/Ethanol/Trifluoroacetic acid/Triethylamine
Flow Rate: 1.0 mL/min
Temperature: Ambient (23 °C)
Injection Volume: 1.0 μ L
Detection: UV 280 nm
Retention (min): 5.23/6.20 (Peak 1/Peak 2)

Resolution: 1.98