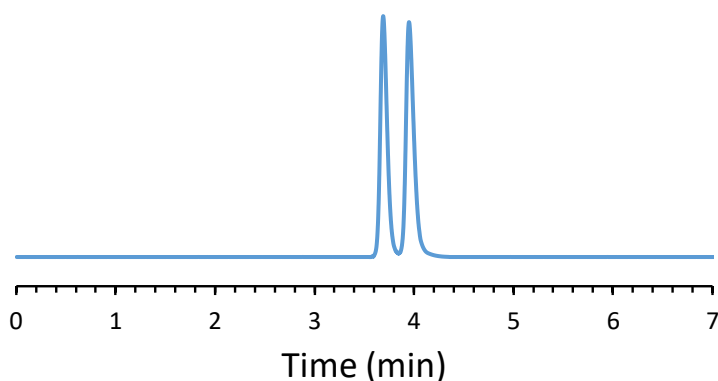


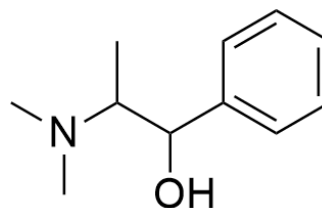
## CHIRAL APPLICATION NOTE

**Sample name:** Methylephedrine

**Chromatogram:**



**Structure:**



### Run Conditions:

Column: VancoShell (10cmx4.6mm, 2.7 $\mu$ m)  
Mobile phase: 100/0.1/0.05: Methanol/Acetic Acid/Triethylamine  
Flow Rate: 1.0 mL/min  
Temperature: Ambient (23 °C)  
Injection Volume: 1.0  $\mu$ L  
Detection: UV 220 nm  
Retention (min): 3.69/3.95 (Peak1/Peak 2)

**Resolution:** 1.92