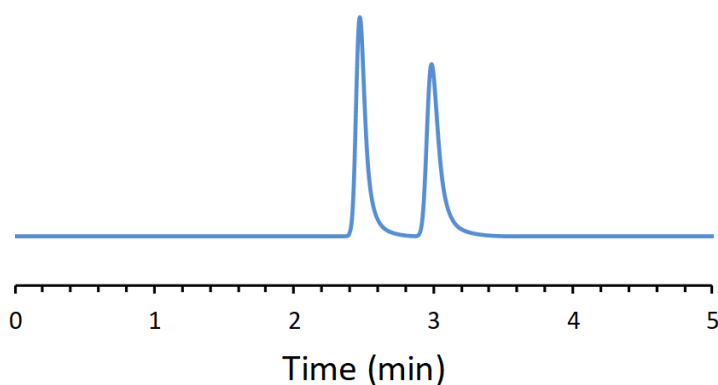


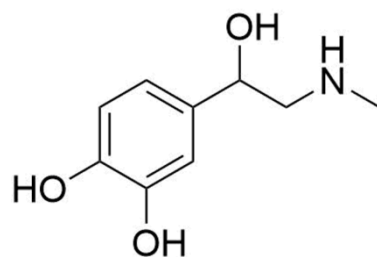
## CHIRAL APPLICATION NOTE

**Sample name:** Epinephrine

**Chromatogram:**



**Structure:**



### Run Conditions:

Column: NicoShell (10cmx4.6mm, 2.7 $\mu$ m)  
Mobile phase: 10/90/0.3/0.2: Acetonitrile/Methanol/Acetic acid/Triethylamine  
Flow Rate: 2.0 mL/min  
Temperature: Ambient (23 °C)  
Injection Volume: 1.0  $\mu$ L  
Detection: UV 230 nm  
Retention (min): 2.47/2.99 (Peak 1/Peak 2)

**Resolution:** 3.63