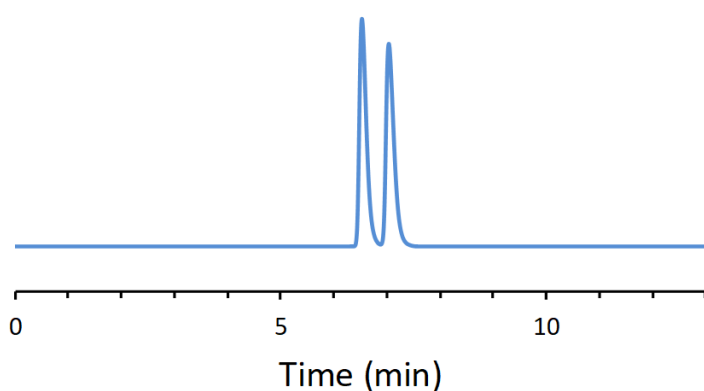


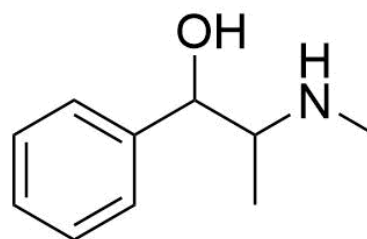
CHIRAL APPLICATION NOTE

Sample name: Ephedrine

Chromatogram:



Structure:



Run Conditions:

Column: NicoShell (10cmx4.6mm, 2.7 μ m)
Mobile phase: 30/70/0.3/0.2: Acetonitrile/Methanol/Acetic acid/Triethylamine
Flow Rate: 0.7 mL/min
Temperature: Ambient (23 °C)
Injection Volume: 1.0 μ L
Detection: UV 220 nm
Retention (min): 6.53/7.04 (Peak 1/Peak 2)

Resolution: 1.98