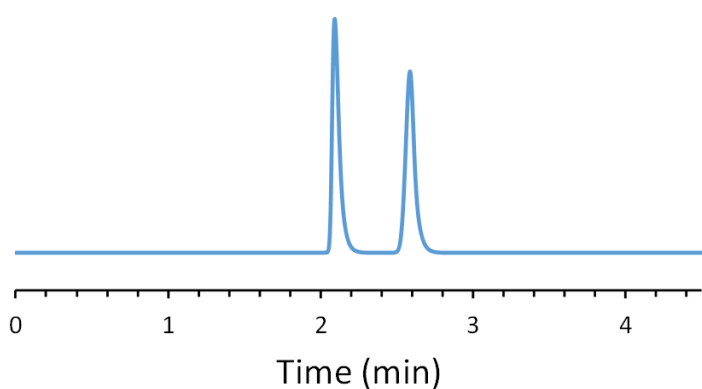


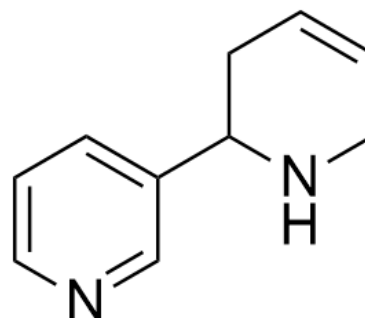
## CHIRAL APPLICATION NOTE

**Sample name:** Anatabine

**Chromatogram:**



**Structure:**



### Run Conditions:

Column: NicoShell (10cmx4.6mm, 2.7 $\mu$ m)  
Mobile phase: 100/0.5 wt %: Methanol/Ammonium Formate  
Flow Rate: 1.0 mL/min  
Temperature: 45 °C  
Injection Volume: 1.0  $\mu$ L  
Detection: UV 263 nm  
Retention (min): 2.09/2.59 (Peak 1/Peak 2)

**Resolution:** 5.19