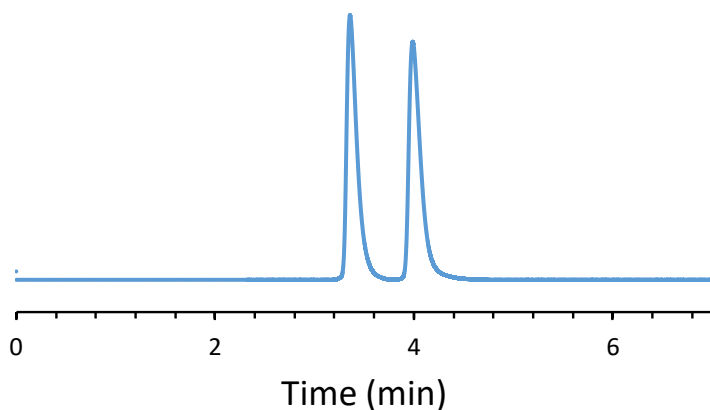


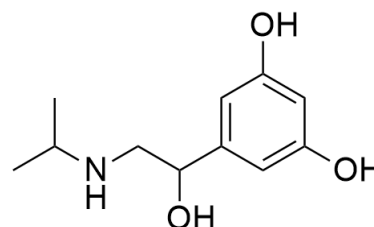
## CHIRAL APPLICATION NOTE

**Sample name:** Metaproterenol

**Chromatogram:**



**Structure:**



### Run Conditions:

Column: NicoShell (10cmx4.6mm, 2.7 $\mu$ m)  
Mobile phase: 60/40/0.3wt%/0.2wt%: Methanol/Acetonitrile/Acetic Acid/TEA  
Flow Rate: 2.0 mL/min  
Temperature: 45  $^{\circ}$ C  
Injection Volume: 1.0  $\mu$ L  
Detection: UV 230 nm  
Retention (min): 3.36/3.99 (Peak1/Peak 2)

**Resolution:** 3.18