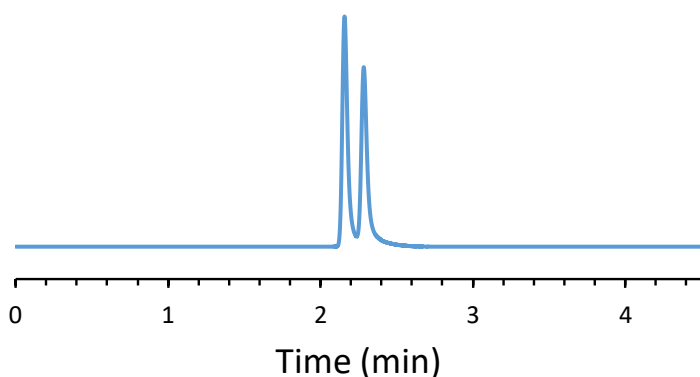


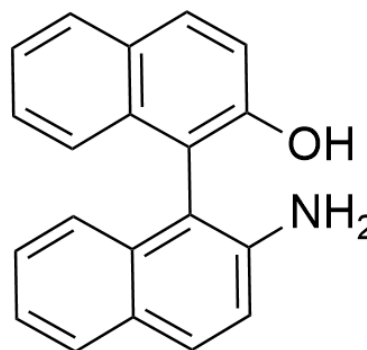
CHIRAL APPLICATION NOTE

Sample name: 2'-amino-1,1'-binaphthalen-2-ol

Chromatogram:



Structure:



Run Conditions:

Column: CDSHell-RSP (15cmx4.6mm, 2.7 μ m)
Mobile phase: 30/70: Acetonitrile/15 mM Ammonium Formate (pH 3.6)
Flow Rate: 0.5 mL/min
Temperature: Ambient (23 °C)
Injection Volume: 1.0 μ L
Detection: UV 230 nm
Retention (min): 2.16/2.28 (Peak1/Peak 2)

Resolution: 1.45