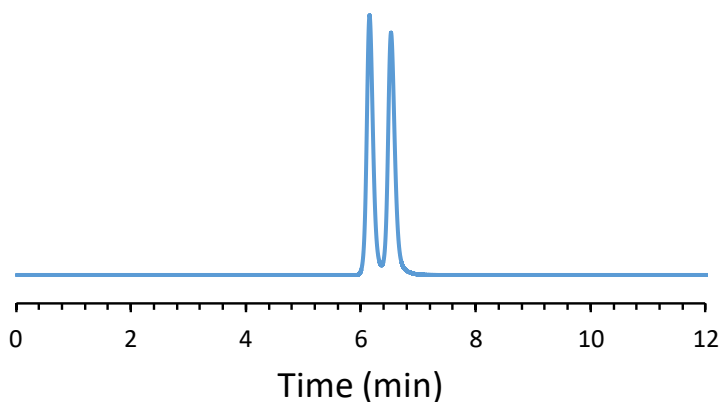


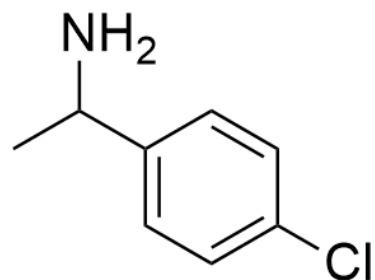
CHIRAL APPLICATION NOTE

Sample name: 1-(4-chlorophenyl)ethylamine

Chromatogram:



Structure:



Run Conditions:

Column: VancoShell (10cmx4.6mm, 2.7 μ m)
Mobile phase: 100/0.2/0.05: Methanol/Acetic Acid/Ammonium Hydroxide
Flow Rate: 0.5 mL/min
Temperature: Ambient (23 °C)
Injection Volume: 1.0 μ L
Detection: UV 220 nm
Retention (min): 6.15/6.53 (Peak1/Peak 2)

Resolution: 1.31