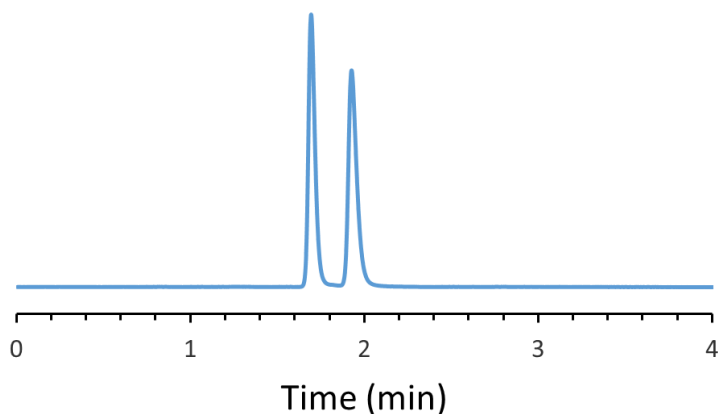


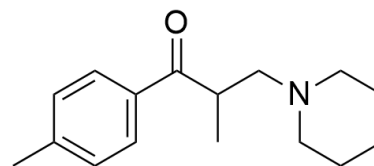
## CHIRAL APPLICATION NOTE

**Sample name:** Tolperisone

**Chromatogram:**



**Structure:**



### Run Conditions:

Column: VancoShell (10cmx4.6mm, 2.7 $\mu$ m)  
Mobile phase: 100/0.1 wt %: Methanol/Ammonium Trifluoroacetate  
Flow Rate: 1.0 mL/min  
Temperature: Ambient (23 °C)  
Injection Volume: 1.0  $\mu$ L  
Detection: UV 220 nm  
Retention (min): 1.69/1.93 (Peak1/Peak 2)

**Resolution:** 3.05