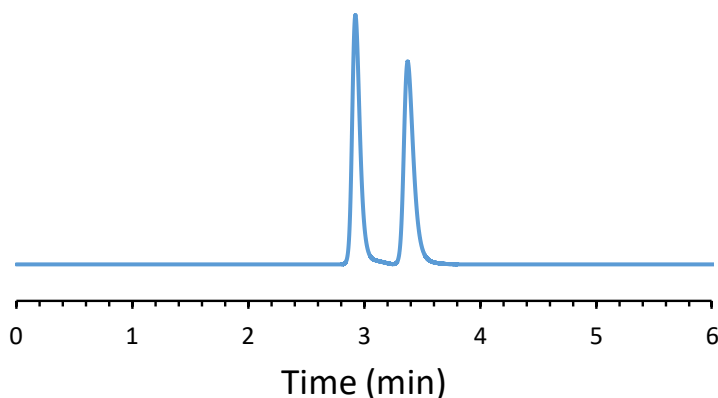


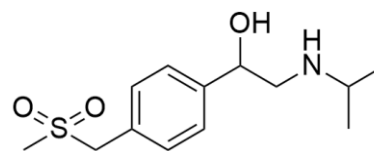
CHIRAL APPLICATION NOTE

Sample name: Sotalol

Chromatogram:



Structure:



Run Conditions:

Column: VancoShell (10cmx4.6mm, 2.7µm)
Mobile phase: 100/0.2/0.05: Methanol/Acetic Acid/Ammonium Hydroxide
Flow Rate: 1.0 mL/min
Temperature: Ambient (23 °C)
Injection Volume: 1.0 µL
Detection: UV 230 nm
Retention (min): 2.93/3.38 (Peak1/Peak 2)

Resolution: 3.28