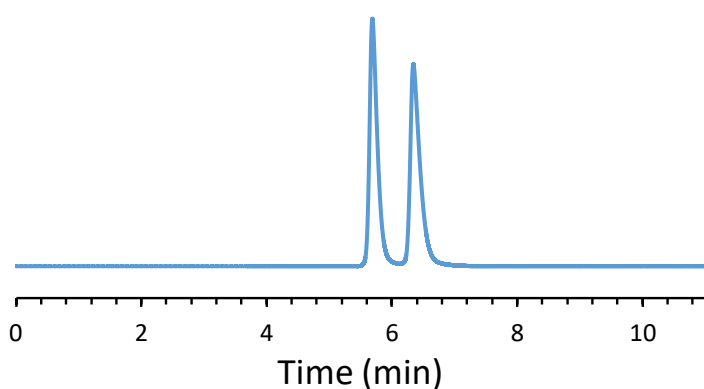


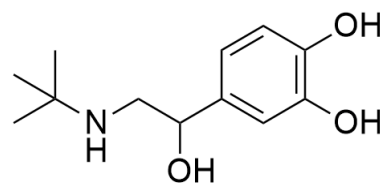
## CHIRAL APPLICATION NOTE

**Sample name:** Salbutamol

**Chromatogram:**



**Structure:**



### Run Conditions:

Column: TeicoShell (10cmx4.6mm, 2.7 $\mu$ m)  
Mobile phase: 60/40/0.3/0.2: Acetonitrile/Methanol/Acetic Acid/TEA  
Flow Rate: 1.0 mL/min  
Temperature: 45 °C  
Injection Volume: 1.0  $\mu$ L  
Detection: UV 230 nm  
Retention (min): 5.69/6.34 (Peak1/Peak 2)

**Resolution:** 2.66