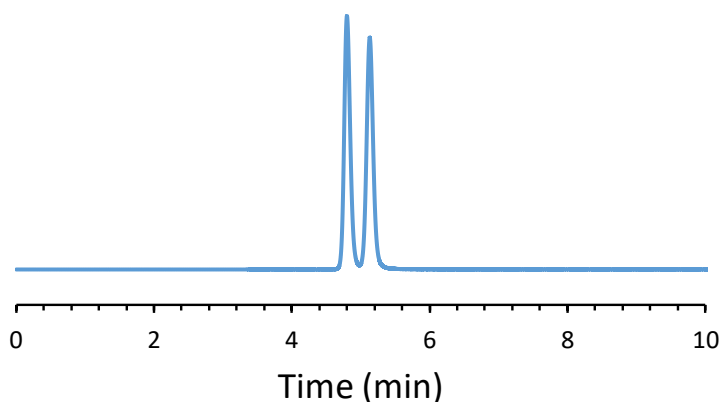


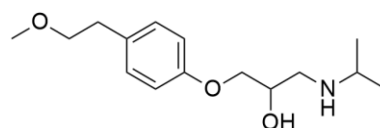
## CHIRAL APPLICATION NOTE

**Sample name:** Metoprolol

**Chromatogram:**



**Structure:**



### Run Conditions:

Column: VancoShell (10cmx4.6mm, 2.7 $\mu$ m)  
Mobile phase: 100/0.2/0.05: Methanol/Acetic Acid/Ammonium Hydroxide  
Flow Rate: 0.3 mL/min  
Temperature: Ambient (23 °C)  
Injection Volume: 1.0  $\mu$ L  
Detection: UV 220 nm  
Retention (min): 4.80/5.13 (Peak1/Peak 2)

**Resolution:** 1.99